



# ISSYK-KUL BRAND

FELT CATALOGUE





## Kyrgyz Republic, Issyk-Kul Region



Issyk-Kul Region is one of the regions of the Kyrgyz Republic. It is situated around Issyk-Kul Lake, which is the second largest alpine lake in the world. "Issyk-Kul" means "hot lake" in Kyrgyz language, and indeed, the lake never freezes. The Region is also surrounded by snow-capped mountains, most of which are over 4000m high. It is the most popular tourist destination in the country due to its amazing coastal areas and beautiful mountains.



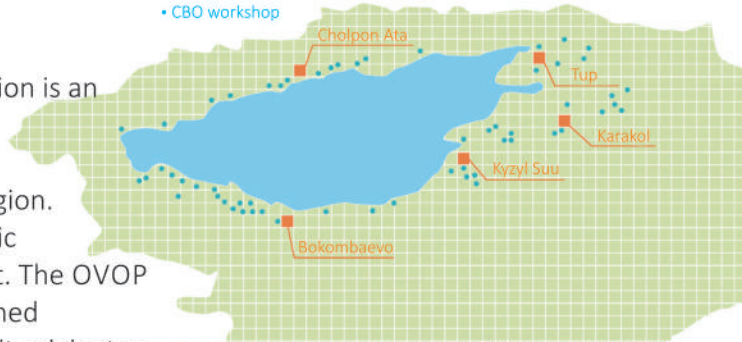




## What is OVOP?

One Village One Product (OVOP) Association is an organization of local producers and it was established on June 24, 2011 in order to activate local communities of Issyk-Kul Region. The Association aims to promote economic activities by introducing OVOP Movement. The OVOP Movement is a strategic movement designed specifically for regional development and it originates from Oita Prefecture in Japan. It is an integrated community development approach with a vision to increase incomes and wealth for local people of Issyk-Kul Region through new product development (value addition to local resources), quality control of products, marketing of high value added products and human resource development.

• CBO workshop



Currently, there are 250 groups (more than 2300 people) in the Association and its members specialize in different production spheres such as felt, handicraft, jam, beekeeping and food processing. The OVOP movement contributes to not only increase income of the local producers but also promote social status of women.

## Product Concept

- **HAND MADE**

All products are made by women's hand.

- **LOCAL**

Only local resources are used.

- **ECO**

Raw materials are natural and organic.

- **SAFE**

Production takes place at clean and safe workshops and goes through QC system such as needle detector, moisture and temperature control etc.

- **NATURAL DYED**

Only natural dyed tints make OVOP color palette.



# MVV

## Mission

- Unite individual efforts into regional power for economical development.

## Vision

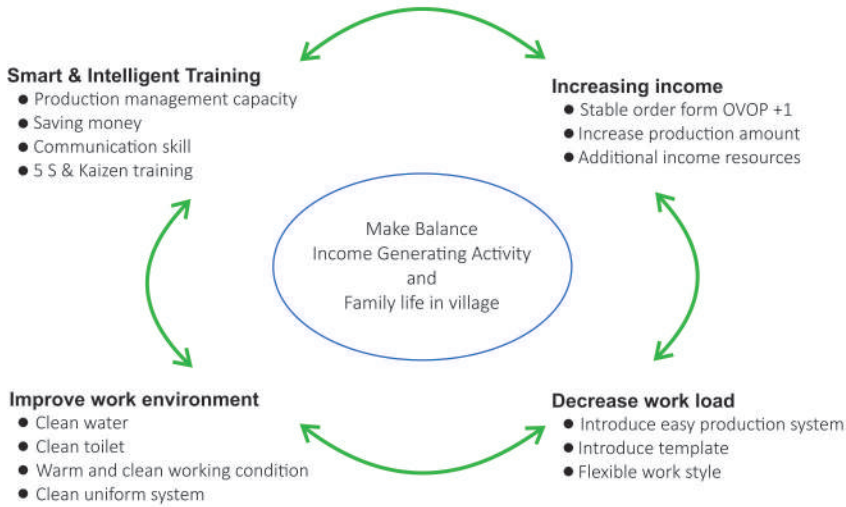
- OVOP method will be commonly used as an effective development approach throughout Kyrgyzstan.

## Value

- Internationally accepted high quality products utilizing Issyk Kul recourses by local initiative.

## Work Concept

The work concept supporting village women consists of below four aspects:



## What is ISSYK-KUL Brand?



Products of the OVOP Association are promoted under the trademark "Issyk-Kul Brand." This trademark is awarded to OVOP products by Issyk-Kul Brand Committee after strict screening and evaluation. The Issyk-Kul Brand Committee is a third party, consisting of representatives of different spheres such as business sector, art historians from local universities, state agencies as center of standardization and metrology and many others to provide diverse feedbacks for nominating the brand.

The Issyk-Kul Brand products are selected according to the following criteria :

- Certified
- Made of local and natural resources
- Eco-friendly
- Unique design

# Merino Wool



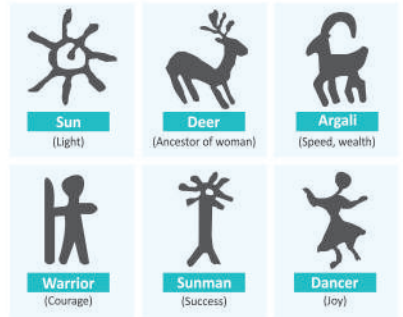
All OVOP felt items are made of 100% pure merino wool. This wool is taken from the exquisite Merino sheep, which are raised at high-mountainous areas with clean water and fresh air at an altitude of more than 2000 meters above sea level.

The secret of merino wool's softness is its exceptionally fine fibres, the diameter of which ranges from 11.5 microns to roughly 24 microns. It is rightly considered to be the softest and finest wool in the world. The characteristics of the merino wool are breathability and moisture management, natural heating and cooling, strength and resilience and many others. Such a natural and fine material as merino wool is being used for production of all felt items.

## Felt

The peculiarity of the most of our felt products, is that they are conjoint and there is no single stitching in them. It is achieved by the special technique called wet felting technique. Needle technique is also being used in producing such products as felt animals, earing and others.

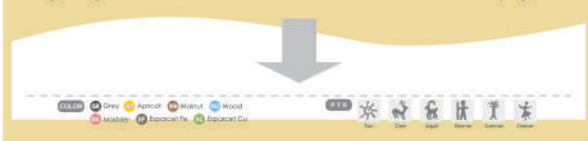
## Petroglyphs



Petroglyphs are paintings and drawings made on the stones and rocks. Basically, petroglyphs show images of animals, hunting scenes, wars and celebrations. Such sites with petroglyphs are not concentrated somewhere in one place, but they are widely scattered across the planet. On the territory of Kyrgyzstan, petroglyphs can be seen in a small valley in the north-eastern slope of the Fergana Range, near the pass Kugart, in the city of Cholpon-Ata and near Barskoon villages in the Issyk-Kul region and in many other parts of the country. Dates of petroglyph drawings range from the beginning of 2000 BC- VII century AD. The images of these petroglyphs have been used and applied in making OVOP felt products.

### [ How to choose product ]

You can choose type [COLOR] and petroglyphs [PTR], which you like. And also you can choose type within some product such as scarf, bag, magnet and so on. Please take a look bottom of each page.



Mug holder / type I	Product name
W:80mm D:80mm	Size
COLOR GR EC AP WN MA WO EF	Color
PTR ALL	Petroglyph
4700070101343	Product code see on the last pages

# Natural dyeing of wool



Espace



Apricot



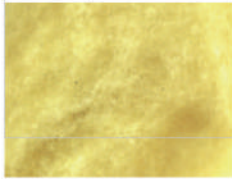
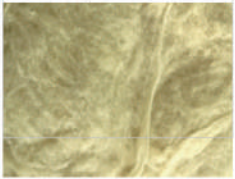
Madder



Woad



Walnut



The significant feature of OVOP felt products is the use of only natural dyes derived from various local growing plants such as espace grass, apricot leaves, madder roots, walnut leaves etc. These plants make OVOP color palette so exquisite and delicate.



Recently, Japanese Aizome dyeing technique was introduced to OVOP production by the Tokushima University professor.

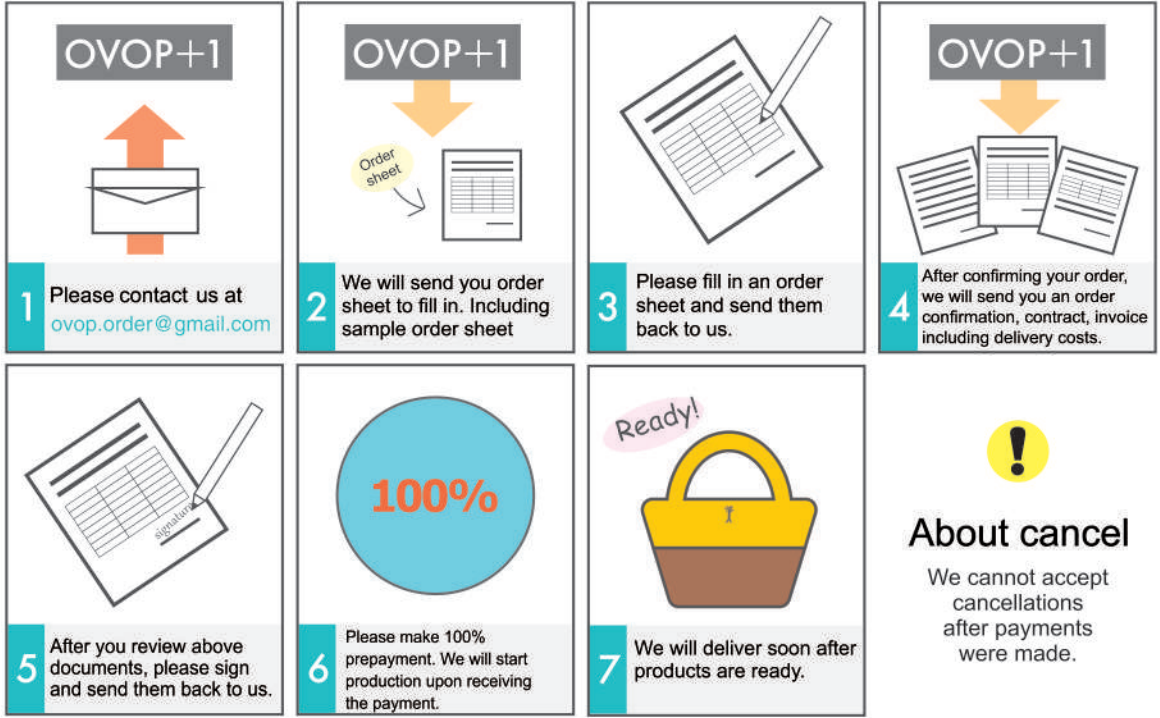
Aizome is known as indigo dyeing and it has 1400 year history as a dyeing method in Japan.

This combination of authentic Japanese aizome dyeing technique and usage of the Kyrgyz local plant called woad brings as a result Issyk-Kul blue color.



# How to order product

for private customer



- Some variations in size, twisting and stretching, and variation in colour or texture may occur because each process is done by hand.
- The colour varies depending on the raw material.
- Discolouration can be caused by direct sunlight and fluorescent light.
- The natural material used of this product has a characteristic odour. It may also contain impurities that occur from the natural ingredients.
- Due to the characteristics of the material, friction may cause scuffing and piling, and nap or piling may come off and get stuck to other items.
- Friction may cause scuffing and whiteness to occur due to the characteristics of the material.
- Be careful not to pull forcefully, as doing so may result in tears or damage to the product.
- If a product gets wet, wipe immediately with a dry cloth and dry in the shade in a place with good ventilation.

<b>HOME &amp; DECO</b> .....	09	<b>CASE &amp; COVER</b> .....	14	<b>BEAUTY &amp; ACCESSORIES</b> .....	18	<b>ANIMALS</b> .....	23
Slipper .....	10	Smartphone case .....	15	Scarf .....	19	Animal statue .....	24-25
Tray.....	10	Multi case .....	15	Necklace .....	20	Pen cover .....	25
Pen tray.....	10	Camera case.....	15	Earring .....	20	Magnet .....	25
Vase case .....	10	Coin case .....	16	Cosmetic case .....	20	Book mark .....	26
Mug holder.....	11	Key case.....	16	Bag .....	21	Bottle cap .....	26
Coaster .....	11	Pen case .....	16	<b>Process of Felt product Vol.3</b> ..	22	Brooch.....	26
Bottle case .....	11	Glass case.....	16	<b>Process of Felt product Vol.4</b> ..	27		
Chair mat .....	12	Name card case .....	16	<b>PRODUCTS CODE LIST</b> .....	28-29		
Cat house.....	12	<b>Process of Felt product Vol.2</b> ..	17				
Ball strap.....	12						
Yarn.....	12						
<b>Process of Felt product Vol.1</b> ..	13						



# HOME & DECO



## SLIPPER



Slipper / Type I / S  
22.5 ~ 23.5 cm

Slipper / Type I / M  
24.5 ~ 25.5 cm

Slipper / Type I / L  
26.5 ~ 27.5 cm

Slipper / Type I / XL  
28.5 ~ 29.5 cm

COLOR GR AP WN EF EC  
PTR ALL



Slipper / Type II / S  
22.5 ~ 23.5 cm

Slipper / Type II / M  
24.5 ~ 25.5 cm

Slipper / Type II / L  
26.5 ~ 27.5 cm

Slipper / Type II / XL  
28.5 ~ 29.5 cm

COLOR GR AP WN EF EC  
PTR ALL



Slipper / Type III / S  
22.5 ~ 23.5 cm

Slipper / Type III / M  
24.5 ~ 25.5 cm

Slipper / Type III / L  
26.5 ~ 27.5 cm

Slipper / Type III / XL  
28.5 ~ 29.5 cm

COLOR GR AP WN EF EC  
PTR NONE  
Leather sole!



## TRAY



Tray / S  
W:90mm L:90mm D:50mm

COLOR GR AP WN EF EC  
PTR ALL



Tray / M  
W:85mm L:170mm D:50mm

COLOR GR AP WN EF EC  
PTR ALL

## PEN TRAY



Pen tray  
L:90mm D:90mm

COLOR GR AP WN WD  
MA EF EC  
PTR NONE

## VASE CASE



Vase case / S  
L:160mm D:150mm

COLOR GR AP WN WD  
MA EF EC  
PTR NONE



Vase case / M  
L:185mm D:165mm

COLOR GR AP WN WD  
MA EF EC  
PTR NONE



Vase case / L  
L:195mm D:175mm

COLOR GR AP WN WD  
MA EF EC  
PTR NONE



COLOR GR Grey AP Apricot WN Walnut WO Wood MA Madder  
EF Esparcet Fe EC Esparcet Cu

PTR A: Sun (Light) B: Deer (ancestor of woman) C: Argali (Speed, wealth) D: Warrior (Courage) E: Sunman (Success) F: Dancer (Joy)

## MUG HOLDER



Mug holder / Type I  
W:80mm D:80mm

COLOR GR AP WN EF EC

PTR ALL

📌 Sold without mug



Mug holder / Type II  
W:80mm D:80mm

COLOR GR AP WN EF EC

PTR NONE

📌 Sold without mug



## COASTER



Coaster / Type I  
W:120mm L:120mm

COLOR GR AP WN EF EC

PTR ALL



Coaster / Type II  
D:100mm

COLOR GR AP WN EF EC

PTR ALL

## BOTTLE CASE



Bottle case / Type I  
W:100mm L:225mm

COLOR GR AP WN EF EC

PTR NONE

The product can be kept cold for about 3 hours in such a bottle case with 10 mm thickness of felt.



Bottle case / Type II  
W:100mm L:295mm

COLOR GR AP WN EF EC

PTR NONE

Convenient to carry!



COLOR GR Grey AP Apricot WN Walnut WO Wood MA Madder  
EF Esparcet Fe EC Esparcet Cu

PTR A: Sun (Light) B: Deer (Inventory of woman) C: Argali (Speed, wealth) D: Warrior (Courage) E: Sunman (Success) F: Dancer (Joy)

## CHAIR MAT



Chair mat / Type I  
D:290mm

COLOR GR AP WN EF EC  
PTR ALL



Chair mat / Type II  
W:310mm L:310mm

COLOR GR AP WN EF EC  
PTR ALL



## CAT HOUSE



Cat house  
W:285mm L:400mm H:200mm

COLOR GR AP WN EF EC  
PTR ALL

## BALL STRAP



Ball strap  
D:30mm

COLOR GR AP WN WO MA EF EC  
PTR ALL

## YARN



Yarn  
50 gr

COLOR GR AP WN EF EC  
PTR NONE

Thread is spinned by hand



COLOR GR Grey AP Apricot WN Walnut WO Wood MA Madder  
EF Esparcet Fe EC Esparcet Cu

PTR A: Sun (light) B: Deer (sexuator of woman) C: Argali (Speed, wealth) D: Warrior (Courage) E: Sunman (Success) F: Dancer (Joy)

## Wool shearing & washing

Merino sheep are raised in high mountainous areas called “Jailoo” in Kyrgyz at an altitude of more than 2000 meters during summer time.

Untouched nature of Jailoo offers nutritious herbs and natural grass for merino sheep feeding. During winter time, they are bred in village farming areas at an altitude of 1700 meters.



Typically, each adult sheep is shorn once each year. The wool shearing process usually takes place at early spring periods and it can be described as the process by which the woolen fleece of a sheep is cut off.

Each merino sheep is shorn by hand one by one. Approximately 5 kg of wool can be received from one adult sheep.



The grease, dust, dirt and any other filths must be removed from the wool. This can be done through washing using soap or detergent and a lot of water. The washed and dried wool is then ready for further carding process.

# CASE & COVER



# SMARTPHONE CASE



Smartphone case / Type I / S  
W:76mm L:146mm

Smartphone case / Type I / M  
W: 77mm L:158mm

COLOR GR AP WN EF EC  
PTR ALL



Smartphone case / Type II / S  
W:76mm L:146mm

Smartphone case / Type II / M  
W: 77mm L:158mm

COLOR GR AP WN EF EC  
PTR ALL

# MULTI CASE



Multi case  
W:105mm L:155mm

COLOR GR AP WN EF EC  
PTR ALL

# CAMERA CASE



Camera case / Type I  
W:90mm L:115mm D:40mm

COLOR GR AP WN WO  
MA EF EC  
PTR ALL



# CAMERA CASE



Camera case / Type II / S  
W:110mm L:75mm D:30mm  
Lace length: 1,2m

Camera case / Type II / M  
W:120mm L:85mm D:30mm  
Lace length: 1,2m

Camera case / Type II / L  
W:130mm L:95mm D:40mm  
Lace length: 1,2m

COLOR GR AP WN EF EC  
PTR ALL



COLOR GR Grey AP Apricot WN Walnut WO Wood MA Madder  
EF Esparcet Fe EC Esparcet Cu

PTR ALL  
A: Sun (Light) B: Deer (ancestor of woman) C: Argali (Speed, wealth) D: Warrior (Courage) E: Sunman (Success) F: Dancer (Joy)

## COIN CASE



Coin case  
D:100mm

COLOR GR AP WN WD  
MA EF EC  
PTR ALL

## KEY CASE



Key case  
W:110mm L:70mm

COLOR GR AP WN WO  
MA EF EC  
PTR ALL

## GLASSES CASE



Glasses case / Type I  
W:75mm L:177mm

COLOR GR AP WN EF EC  
PTR ALL

Glasses case / Type II  
W:60mm L:170mm D:30mm

COLOR GR AP WN EF EC  
PTR ALL

## PEN CASE



Pen case  
W: 230 L: 180 mm

COLOR GR AP WN EF EC  
PTR ALL



## NAME CARD CASE



Name card case  
W:100mm L:61mm

COLOR GR AP WN WO  
MA EF EC  
PTR ALL

COLOR GR Grey AP Apricot WN Walnut WO Wood MA Madder  
EF Esparcet Fe EC Esparcet Cu

PTR A: Sun (Light) B: Deer (master of women) C: Argali (Speed, wealth) D: Warrior (Courage) E: Sunman (Success) F: Dancer (Joy)



Process  
of  
Felt product  
Vol.2

## Wool dyeing & carding



The significant feature of our felt products is that we rely only on natural dyes made from sainfoin grass, woad, nut husks, onion shells, apricot leaves, madder grass roots, walnut leaves and many others. All those dyeing materials and resources are locally harvested. One can choose from a range of natural colors starting from white, grey, green and orange, blue and red. However, one should understand that natural dyeing materials and resources are seasonal or limited amount is available, therefore some colors might not be available the whole year.



Washed merino wool must be carded before the production process. Wool carding is conducted in the carding machine and it can be described as a mechanical process that disentangles, cleans and intermixes fibers to produce a continuous web or sliver suitable for subsequent processing. Wool becomes very soft after the carding process and is ready for further felt production process.



Before carding



After carding

# BEAUTY & ACCESSORIES



# SCARF

Scarf Silk / Type I  
W:400mm L:1860mm

1 Narrow type

Scarf Silk / Type II  
W:600mm L:1860mm

1 Wide type

COLOR WO-AP-WN-MA-ON-ES



PTR NONE



Scarf Felt / Type I  
W:220mm L:1800mm

TYPE 3 lines version

COLOR X · Y · Z



PTR ALL

Scarf Felt / Type II  
W:220mm L:1800mm

TYPE 2 lines version

COLOR X · Y · Z



PTR ALL



COLOR GR Grey AP Apricot WN Walnut WO Wood MA Madder  
EF Esparcet Fe EC Esparcet Cu

PTR A: Sun (Light) B: Deer (ancestor of woman) C: Argali (fierce, wealth) D: Warrior (Courage) E: Sunman (Success) F: Dancer (Joy)

## NECKLACE



Necklace / Type I  
D1:20mm D2:30mm  
Length: 800mm

COLOR GR AP WN WO  
MA EF EC  
PTR NONE



Necklace / Type II  
D1:15mm D2:20mm D3:25mm D4:30mm  
Length: 680mm

COLOR GR AP WN WO  
MA EF EC  
PTR ALL



Necklace / Type III  
D:10mm Length: 820 mm

COLOR GR AP WN WO  
MA EF EC  
PTR NONE

## EARRING



Earring / Type I  
D:20mm

COLOR GR AP WN WO  
MA EF EC  
PTR NONE



Earring / Type II  
D:20mm

COLOR GR AP WN WO  
MA EF EC  
PTR NONE



Earring / Type III  
D1:10mm D2:20mm

COLOR GR AP WN WO  
MA EF EC  
PTR NONE



## COSMETIC CASE



Cosmetic case / Type I  
W:130mm L:100mm D:100mm

COLOR GR AP WN EF EC  
PTR ALL



Cosmetic case / Type II  
W:180mm L:110mm D:50mm

COLOR GR AP WN EF EC  
PTR ALL



Cosmetic case / Type III  
W:220mm L:150mm D:55mm

COLOR GR AP WN EF EC  
PTR ALL

COLOR GR Grey AP Apricot WN Walnut WO Wood MA Madder  
EF Esparcet Fe EC Esparcet Cu

PTR A: Sun (light) B: Deer (ancestor of woman) C: Argali (Speed, wealth) D: Warrior (Courage) E: Sunman (Success) F: Dancer (Joy)

# BAG



Bag / Type I / S  
W:230mm L:370mm

COLOR GR AP WN EF EC

P T R ALL

Bag / Type I / L  
W:375mm L:570mm

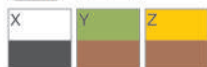
COLOR GR AP WN EF EC

P T R ALL



Bag / Type II  
W:250mm L:330mm

COLOR X · Y · Z



P T R ALL

Bag / Type III / S  
W:120mm L:205mm

COLOR GR AP WN EF EC

P T R ALL

Bag / Type III / M  
W:150mm L:215mm

COLOR GR AP WN EF EC

P T R ALL

Bag / Type IV  
W:450mm L:245mm

COLOR GR AP WN EF EC

P T R NONE



COLOR GR Grey AP Apricot WN Walnut WO Wood MA Madder

EF Esparcet Fe EC Esparcet Cu

P T R



A: Sun (light)



B: Deer (master of woman)



C: Argali (Speed, wealth)



D: Warrior (Courage)



E: Sunman (Success)



F: Dancer (Joy)

Process  
of  
Felt product  
Vol.3

## Wet felt technique

Wet felting technique has been used for centuries by Kyrgyz people. Hot water and soap are necessary for wet felting technique and it can be described as a process of connecting fibers by repeatedly pressing together wet merino sheep's wool and shrinking it to the desired shape. Because the fabric is non-woven, it can be shaped, molded and added to, much like wet clay. Thus the shape of the felt products is made. Such products as pouches, slippers, coasters and many others are produced by wet felting technique.



- 1 It is necessary to prepare wool and soapy water. Wool need to be evenly placed.



- 2 Then tulle need to be placed over the top of wool, put soapy water and gently start rubbing over the product.



- 3 It is necessary to continue to rub till the product is shaped.



- 4 When the product is shaped enough, it is necessary to rinse and dry the product.



# ANIMALS



## ANIMAL STATUE



Statue Donkey  
W:35mm L:120mm H:85mm



Statue Deer  
W:35mm L:120mm H:85mm



Statue Yak  
W:35mm L:120mm H:85mm



Statue Sheep  
W:35mm L:120mm H:75mm



Statue Snow Leopard  
W:35mm L:120mm H:85mm



Statue Argali  
W:35mm L:120mm H:85mm



Statue Mountain Goat  
W:35mm L:120mm H:85mm



Statue Goat with Baby  
Goat W:35mm L:120mm H:85mm  
Goat baby W:25mm L:90mm H:65mm



Statue Lama  
W:40mm L:130mm H:120mm

Statue strap Bee /  
Type I

W: 30mm L: 60mm



Statue strap Bee /  
Type II

W: 28mm L: 50mm



Statue strap Bee  
in house

W:30mm L:25mm



## ZOO ANIMAL STATUE



Statue Elephant  
W:47mm L:120mm H:90mm



Statue Camel  
W:40mm L:135mm H:105mm



Statue Hippo  
W:48mm L:145mm H:75mm



Statue Rhino  
W:43mm L:133mm H:86mm



## ZOO ANIMAL STATUE



Statue Caribou  
W:39mm L:110mm H:110mm



Statue Giraffe  
W:35mm L:80mm H:155mm



Statue Bison  
W: 47mm L:130mm H:80mm



Statue Bear / Type I  
W:47mm L:128mm H:78mm



Statue Bear / Type II  
W:63mm L:80mm H:105mm



Statue Snowman  
L:47mm H:88mm

## PEN COVER



Pen cover Animals  
L:100~120mm D:20~25mm

**TYPE** Donkey  
Deer  
Yak  
Sheep  
Mountain goat  
Snow leopard  
Argali



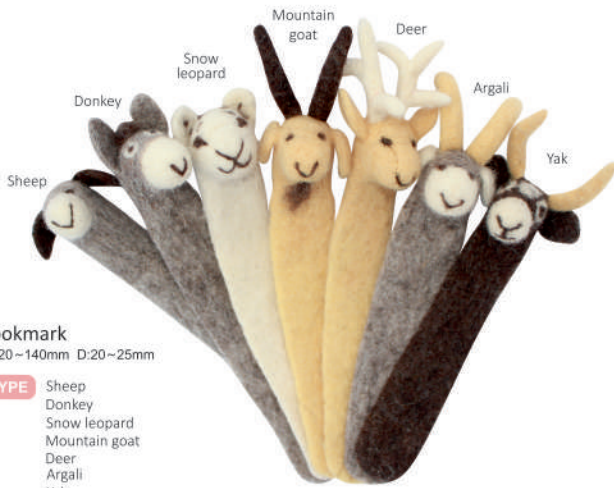
## MAGNET



Magnet Animals  
W:60~65mm L:30~32mm

**TYPE** Donkey  
Deer  
Yak  
Sheep  
Mountain goat  
Snow leopard  
Argali

## BOOK MARK



### Bookmark

L:120~140mm D:20~25mm

**TYPE** Sheep  
Donkey  
Snow leopard  
Mountain goat  
Deer  
Argali  
Yak



## BOTTLE CAP



### Bottle cap

W:35~37mm L:70~75mm

**TYPE** Donkey  
Deer  
Yak  
Sheep  
Mountain goat  
Snow leopard  
Argali



## BROOCH



### Brooch Animals

W:30mm L:35mm

**TYPE** Donkey  
Deer  
Yak  
Sheep  
Mountain goat  
Snow leopard  
Argali

Process  
of  
Felt product  
Vol.4

Felting needles come in several different sizes and styles, but all have one thing in common: barbs. Tiny sharp hooks catch on the wool fibers as you stab the needle into the wool, tangling them together.

Needle

## Needle technique

Needle felting technique is a process of making felt products from wool by means of poking the fibers thousands of times with one or more barbed needles and without the use of water and soap. Special felting needles are used as a sculpting tool in that process. Merino wool fibers are unique from synthetic fibers in that their fibers can be agitated by the tiny barbs on a needle, which then forces them to tangle and bond together, basically creating tons of tiny knots and tangles which, after much repeated agitation, thickens more and more to form a solid fiber known as felt.



### Felt animals

All our felt animal products such as sheep, donkey, goat and many others were created with a needle felting technique from locally sourced merino wool. It is really quite incredible to watch the wool come together by needle felting technique & take a form of the felt animal products. Each felt animal might vary in size and shape slightly, as they are sculpted by hand. These animal products can be used as souvenir or for decoration and suitable for play items as well.

### Petroglyphs

Petroglyph images on our felt products such as "dancing lady", "sun man" and many others are also made by needle felting technique.





## SCARF FELT

Scarf felt Type I / X.....	4700070101169
Scarf felt Type I / Y.....	4700070105020
Scarf felt Type I / Z.....	4700070105037
Scarf felt Type II / X.....	4700070101169
Scarf felt Type II / Y.....	4700070105044
Scarf felt Type II / Z.....	4700070105051

## NECKLACE

Necklace Type I GREY.....	4700070100537
Necklace Type I APRICOT.....	4700070105068
Necklace Type I WALNUT.....	4700070105075
Necklace Type I WOAD.....	4700070105082
Necklace Type I MADDER.....	4700070105099
Necklace Type I ESPARCET Fe.....	4700070105105
Necklace Type I ESPARCET Cu.....	4700070105112
Necklace Type II GREY.....	4700070100544
Necklace Type II APRICOT.....	4700070105129
Necklace Type II WALNUT.....	4700070105136
Necklace Type II WOAD.....	4700070105143
Necklace Type II MADDER.....	4700070105150
Necklace Type II ESPARCET Fe.....	4700070105167
Necklace Type II ESPARCET Cu.....	4700070105174
Necklace Type III GREY.....	4700070100551
Necklace Type III APRICOT.....	4700070105181
Necklace Type III WALNUT.....	4700070105198
Necklace Type III WOAD.....	4700070105204
Necklace Type III MADDER.....	4700070105211
Necklace Type III ESPARCET Fe.....	4700070105228
Necklace Type III ESPARCET Cu.....	4700070105235

## EARRING

Earring Type I GREY.....	4700070100506
Earring Type I APRICOT.....	4700070105242
Earring Type I WALNUT.....	4700070105259
Earring Type I WOAD.....	4700070105266
Earring Type I MADDER.....	4700070105273
Earring Type I ESPARCET Fe.....	4700070105280
Earring Type I ESPARCET Cu.....	4700070105297
Earring Type II GREY.....	4700070100513
Earring Type II APRICOT.....	4700070105303
Earring Type II WALNUT.....	4700070105310
Earring Type II WOAD.....	4700070105327
Earring Type II MADDER.....	4700070105334
Earring Type II ESPARCET Fe.....	4700070105341
Earring Type II ESPARCET Cu.....	4700070105358
Earring Type III GREY.....	4700070100520
Earring Type III APRICOT.....	4700070105365
Earring Type III WALNUT.....	4700070105372
Earring Type III WOAD.....	4700070105389
Earring Type III MADDER.....	4700070105396
Earring Type III ESPARCET Fe.....	4700070105402
Earring Type III ESPARCET Cu.....	4700070105419

## COSMETIC CASE

Type I GREY.....	4700070105426
Type I APRICOT.....	4700070105433
Type I WALNUT.....	4700070105440
Type I ESPARCET Fe.....	4700070105457
Type I ESPARCET Cu.....	4700070105464
Type II GREY.....	4700070101114
Type II APRICOT.....	4700070105471
Type II WALNUT.....	4700070105488
Type II ESPARCET Fe.....	4700070105495
Type II ESPARCET Cu.....	4700070105501
Type III GREY.....	4700070101121
Type III APRICOT.....	4700070105518
Type III WALNUT.....	4700070105525
Type III ESPARCET Fe.....	4700070105532
Type III ESPARCET Cu.....	4700070105549

## BAG

Bag Type I / S GREY.....	4700070101244
Bag Type I / S APRICOT.....	4700070105556
Bag Type I / S WALNUT.....	4700070105563
Bag Type I / S ESPARCET Fe.....	4700070105570
Bag Type I / S ESPARCET Cu.....	4700070105587
Bag Type I / L GREY.....	4700070101251
Bag Type I / L APRICOT.....	4700070105594
Bag Type I / L WALNUT.....	4700070105600
Bag Type I / L ESPARCET Fe.....	4700070105617
Bag Type I / L ESPARCET Cu.....	4700070105624
Bag Type II / X.....	4700070105631
Bag Type II / Y.....	4700070105648
Bag Type II / Z.....	4700070105655
Bag Type III / S GREY.....	4700070100919
Bag Type III / S APRICOT.....	4700070105662
Bag Type III / S WALNUT.....	4700070105679
Bag Type III / S ESPARCET Fe.....	4700070105686
Bag Type III / S ESPARCET Cu.....	4700070105693
Bag Type III / M GREY.....	4700070102647
Bag Type III / M APRICOT.....	4700070105709
Bag Type III / M WALNUT.....	4700070105716
Bag Type III / M ESPARCET Fe.....	4700070105723
Bag Type III / M ESPARCET Cu.....	4700070105730
Bag Type IV GREY.....	4700070102654
Bag Type IV APRICOT.....	4700070105747
Bag Type IV WALNUT.....	4700070105754
Bag Type IV ESPARCET Fe.....	4700070105761
Bag Type IV ESPARCET Cu.....	4700070105778

## ANIMAL STATUE

Statue Donkey.....	4700070100070
Statue Deer.....	4700070100223
Statue Yak.....	4700070100254
Statue Sheep.....	4700070100100
Statue Snow Leopard.....	4700070100131
Statue Argali.....	4700070100193
Statue Mountain Goat.....	4700070100162
Statue Goat with Baby.....	4700070100339
Statue Lama.....	4700070100421
Statue strap Bee Type I.....	4700070100353
Statue strap Bee Type II.....	4700070100360
Statue strap Bee in house.....	4700070100391
Statue Elephant.....	4700070102692
Statue Camel.....	4700070106034
Statue Rhino.....	4700070102739
Statue Hippo.....	4700070102715
Statue Caribou.....	4700070102845
Statue Giraffe.....	4700070102708
Statue Bison.....	4700070102838
Statue Bear Type I.....	4700070100452
Statue Bear Type II.....	4700070102753
Statue Snowman.....	4700070102852

## PEN COVER

Pen cover Donkey.....	4700070105792
Pen cover Deer.....	4700070105785
Pen cover Yak.....	4700070105822
Pen cover Sheep.....	4700070105815
Pen cover Mountain Goat.....	4700070100971
Pen cover Snow Leopard.....	4700070105808
Pen cover Argali.....	4700070105839

## MAGNET

Magnet Donkey.....	4700070105860
Magnet Deer.....	4700070105853
Magnet Yak.....	4700070105891
Magnet Sheep.....	4700070105884
Magnet Mountain Goat.....	4700070105846
Magnet Snow Leopard.....	4700070105877
Magnet Argali.....	4700070105907

## BOOK MARK

Book mark Donkey.....	4700070105921
Book mark Deer.....	4700070105914
Book mark Yak.....	4700070105952
Book mark Sheep.....	4700070105945
Book mark Mountain Goat.....	4700070102555
Book mark Snow Leopard.....	4700070105938
Book mark Argali.....	4700070105969

## BOTTLE CAP

Bottle cap Donkey.....	4700070105983
Bottle cap Deer.....	4700070105976
Bottle cap Yak.....	4700070106010
Bottle cap Sheep.....	4700070106003
Bottle cap Mountain Goat.....	4700070102630
Bottle cap Snow Leopard.....	4700070105990
Bottle cap Argali.....	4700070106027

## BROOCH

Brooch Donkey.....	4700070102784
Brooch Deer.....	4700070102777
Brooch Yak.....	4700070102814
Brooch Sheep.....	4700070102807
Brooch Mountain Goat.....	4700070102760
Brooch Snow Leopard.....	4700070102791
Brooch Argali.....	4700070102821

## Custom-made Products

for corporate customer

We are able to make products according to customer's request and design.

\* The minimum order amount is 100-1000 pcs depending on products design and size.



### ! About cancellation !

Cancellation is not allowed after payments were made.

Please do not hesitate to contact us for any inquiry.

- Some variations in size, twisting and stretching, and variation in colour or texture may occur because each process is done by hand.
- The colour varies depending on the raw material.
- Discolouration can be caused by direct sunlight and fluorescent light.
- The natural material used of this product has a characteristic odour. It may also contain impurities that occur from the natural ingredients.
- Due to the characteristics of the material, friction may cause scuffing and piling, and nap or piling may come off and get stuck to other items.
- Friction may cause scuffing and whiteness to occur due to the characteristics of the material.
- Be careful not to pull forcefully, as doing so may result in tears or damage to the product.
- If a product gets wet, wipe immediately with a dry cloth and dry in the shade in a place with good ventilation.

Please feel free to ask if you have questions



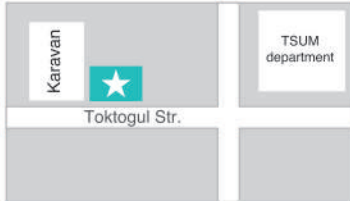
# Information



## Issyk Kul Brand Shop

### Shop in Karakol

Karakol, Toktogul Str.  
(near the "Karavan" supermarket)  
Tel: +996 3922 54357



## OVOP Center

Bishkek, 140  
Toktogul Str.  
Tel: +996 556 504 503



## One Village One Product Association "One Village One Product +1" Public Union



61, Tynystanov Str.  
722200 Karakol town, Kyrgyz Republic  
Tel: +996 3922 51601, e-mail: [ovop.kyrgyzstan@gmail.com](mailto:ovop.kyrgyzstan@gmail.com)

PU «OVOP + 1» - organization that provides business and logistics services to «OVOP Association» members.



One Village One Product Issyk Kul



ovop.kg



JICA supports  
OVOP Association & OVOP + 1

